



EMBRACE THE JOY OF PARK LIFE



# Contemporary Retreat

## Yonezawa's Mountain Resort

**WVIP Group**, one of our core missions is to create Japan's most captivating real estate investment opportunities. By fostering a unique harmony between people and the local environment, we craft these opportunities and deliver exceptional returns to global investors.

**RAIJIN RIDGE** - Nestled in the serene mountain retreat of Yonezawa, Raijin Ridge seamlessly blends modern luxury design with breathtaking natural vistas. It is a tranquil haven away from the clamor of city life, inviting you to fully immerse yourself in nature's peaceful embrace. Whether you're captivated by the enchanting winter ski season or the awe-inspiring landscapes that evolve with the changing seasons, Raijin Ridge stands as the perfect place to invest.







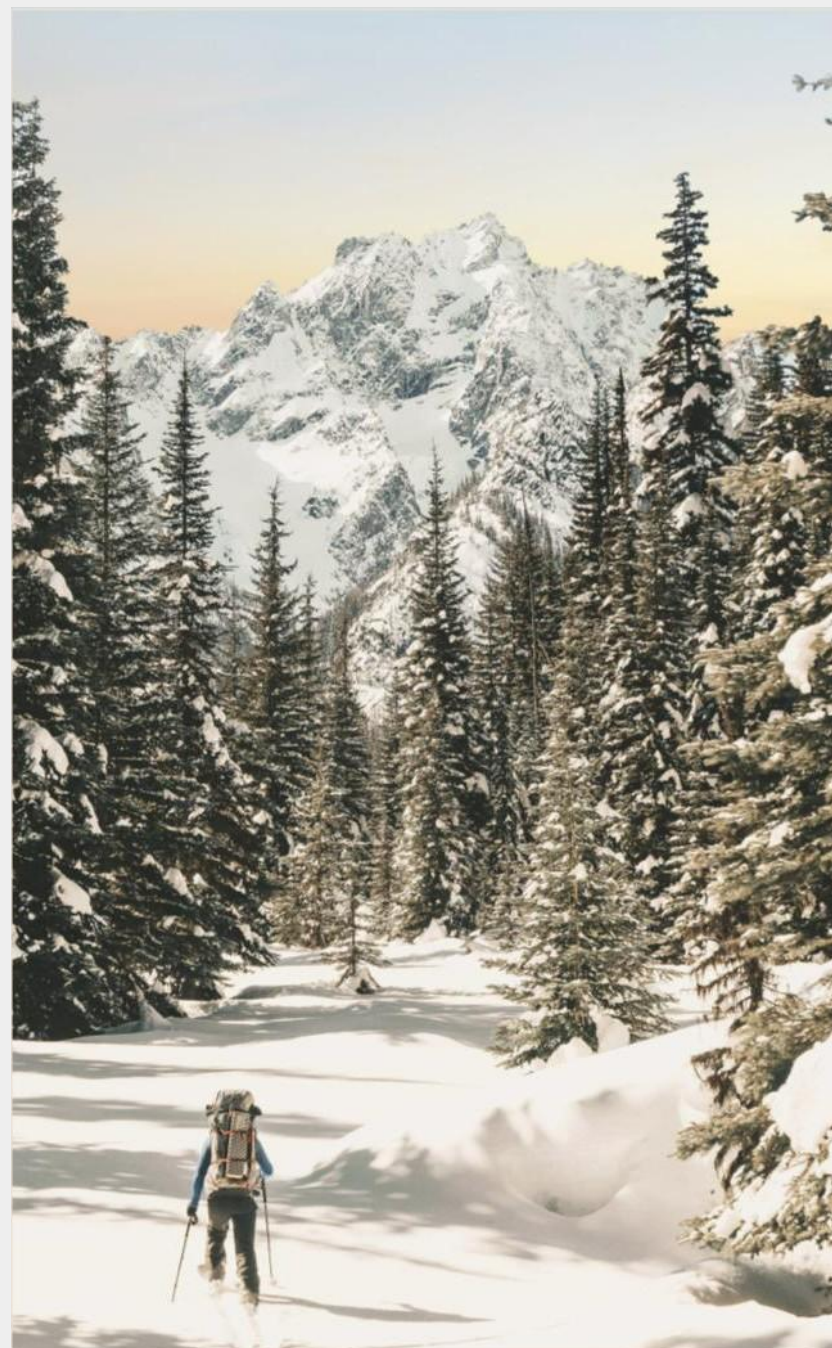




# Yonezawa

Dive into the breathtakingly spectacular bird's-eye view of the unspoiled natural habitats of Yonezawa. With all that is on offer, this city, steeped in Japanese culture and history, is only a two-hour bullet train ride from Tokyo.

Discover the rich traditional heritage of Yamagata Prefecture and indulge in the local delicacy of Yonezawa Beef, not to mention the traditional relaxing onsen, famed handcrafted silk, and more.











## Skiing in Yonezawa

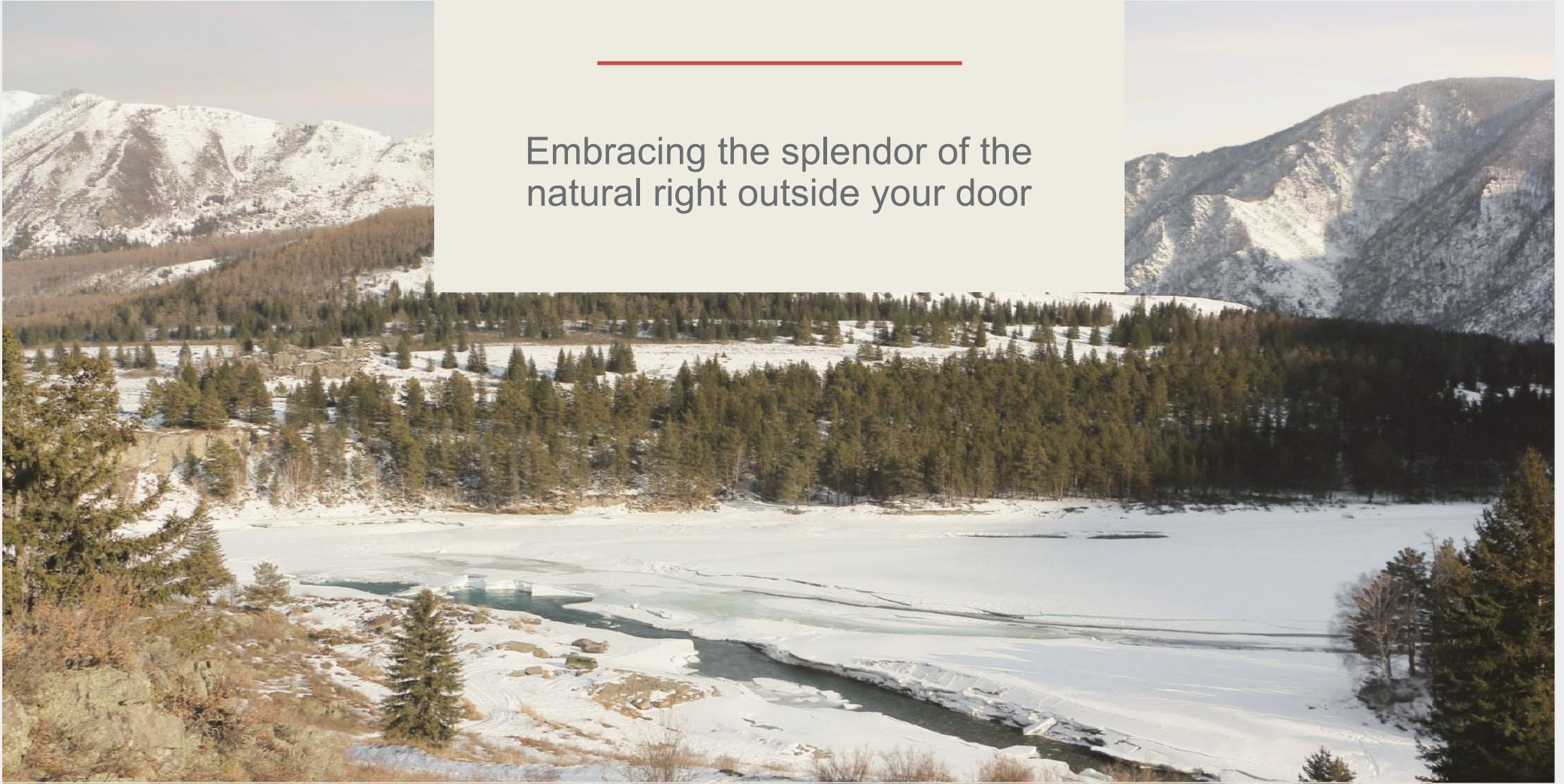
Yamagata Prefecture is located in the Tohoku region and is surrounded by high-altitude mountains such as Mount Chokai and Mount Itoyo. During the skiing months, which typically run from December to February, areas with abundant snowfall can see nearly 6 meters of snow, creating perfect conditions for enjoying soft, powdery snow at ski resorts.



# Embark on Your Enchanting Journey

---

Embracing the splendor of the  
natural right outside your door







## Location

Yonezawa is the southernmost city in Yamagata Prefecture. There are the mountains to the south and east of the city, and they are the border between Yamagata and Fukushima Prefectures.



1.5 hours driving from Sendai International Airport



3 hours driving from Narita International Airport



2 hours from Tokyo JR station to Yonezawa JR station on Shinkansen lines









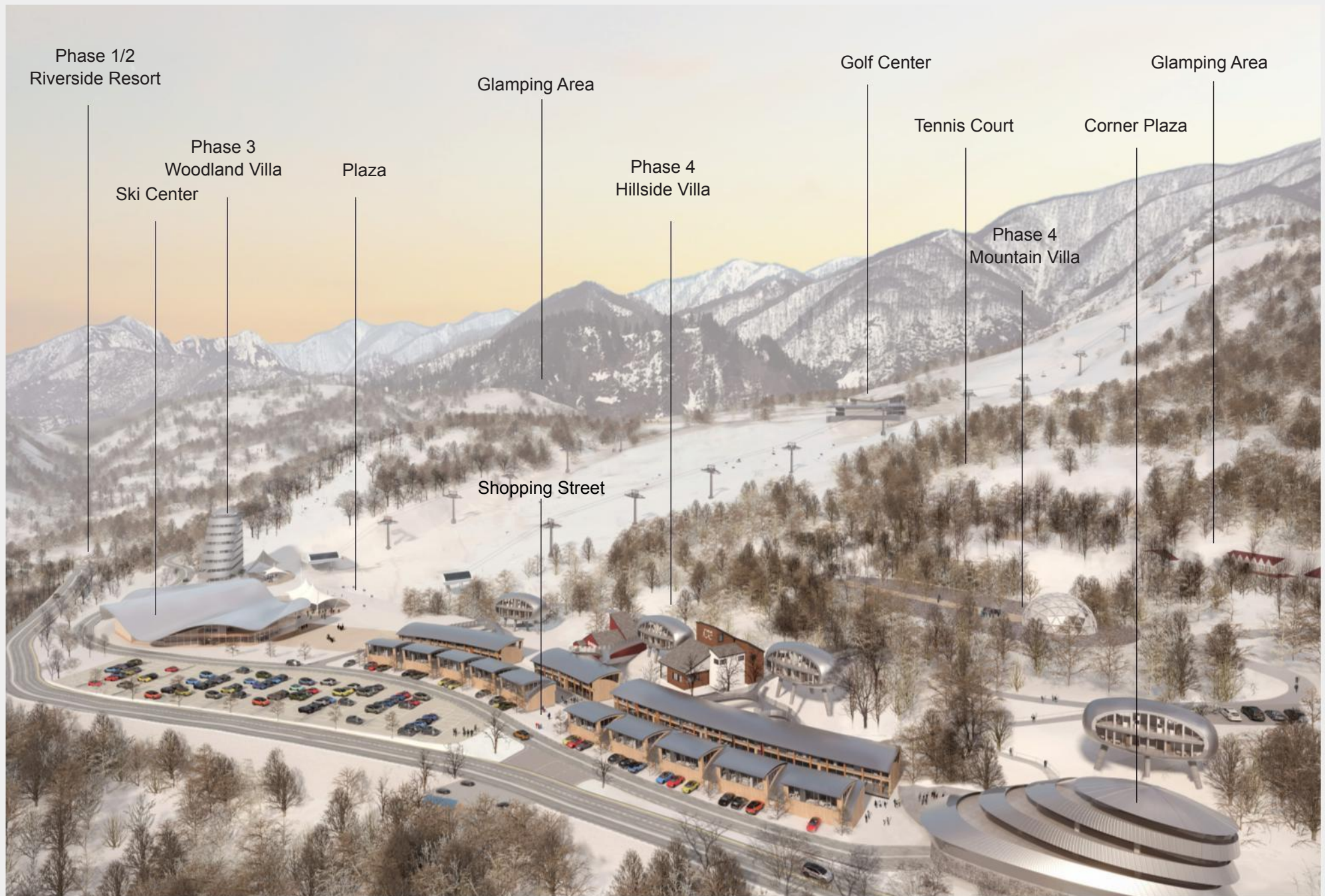
## Mountain Resort at the Heart of Japan's Tohoku Region

Strategically located in a prime central position, this mountain resort offers exceptional convenience, providing easy access to nearby ski areas and attractions.

### Driving Times from Yonezawa Ski Resort to Nearby Ski Areas

Tengendai Kogen Ski Area	46minutes
EN RESORT Grandeco	86minutes
Hoshino Resorts NEKOMA Mountain	90minutes
Listel Ski Fantasia	78minutes
Miyagi Zao Shiroishi Ski Resort	75minutes
ZaoLIZA WORLD	65minutes
Zao Sarukura Ski Resort	56minutes
Zao Onsen Ski Resort	64minutes





Phase 1/2  
Riverside Resort

Phase 3  
Woodland Villa  
Ski Center

Plaza

Glamping Area

Phase 4  
Hillside Villa

Shopping Street

Golf Center

Tennis Court

Phase 4  
Mountain Villa

Corner Plaza

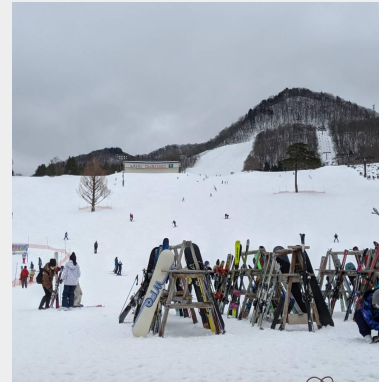
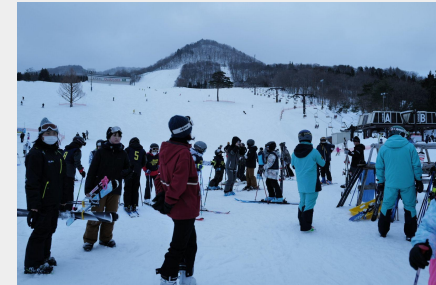
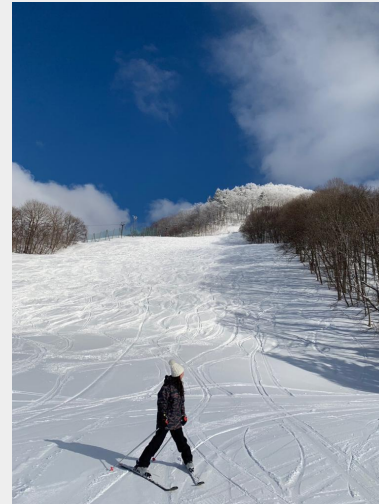
Glamping Area



# Yonezawa Snow World Development Plan

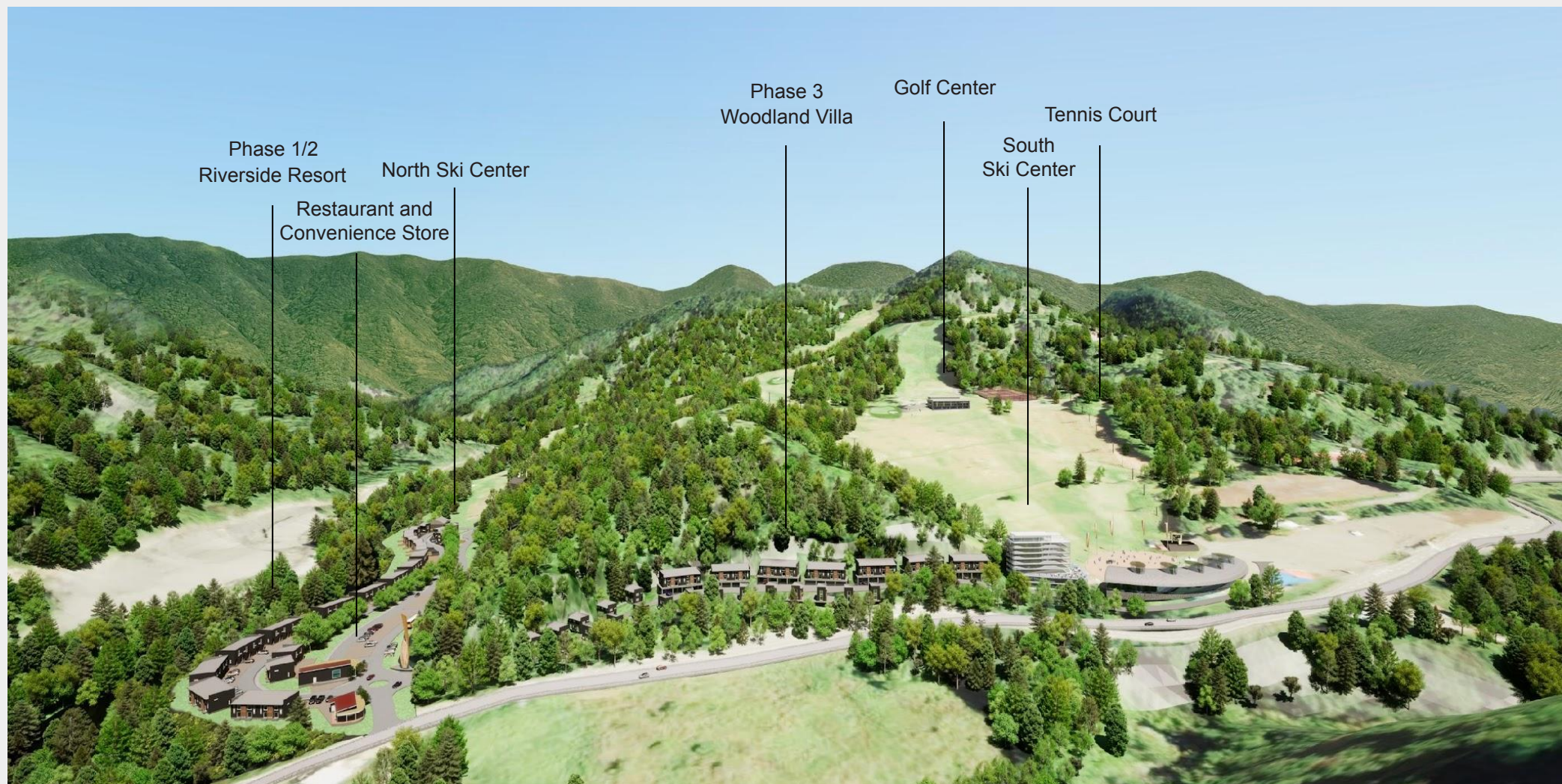
Provided by Yonezawa Snow World

The resort extends along the Kurisugawa River and mountain slopes, blending Yonezawa's natural beauty into a vibrant, year-round destination.



Current Status





Phase 1/2  
Riverside Resort

North Ski Center

Restaurant and  
Convenience Store

Phase 3  
Woodland Villa

Golf Center

Tennis Court

South  
Ski Center



# Resort Map

Conveniently located, the resort is just an 8-minute drive from the highway exit and 15 minutes from Yonezawa JR Station, with shuttle bus services available. Whether driving or using public transport, access is easy. The resort is close to Yonezawa City Center, offering a variety of shopping and dining options, making it the perfect destination for family vacations or group getaways.

The resort features a rare 150-meter-wide beginner-friendly slope, designed for safety and ease. Only a 7-minute walk from the gondola station, the resort also offers SKI IN/SKI OUT access for quick and convenient skiing, avoiding the crowds. Night skiing is available on weekends, providing a seamless skiing experience for all-day fun.





Kariyasu  
River

Highway  
Entrance



Riverside  
Resort I

**Type A – Studio**

34.45 sqm / 372 sq ft

Includes a dedicated  
parking space

**Type B – 2 Bed Apartment**

56.09 sqm / 604 sq ft

Includes a dedicated  
parking space

Riverside  
Resort II

**Type A – Studio**

34.45 sqm / 372 sq ft

Includes a dedicated  
parking space

**Type B – 2 Bed Apartment**

56.09 sqm / 604 sq ft

Includes a dedicated  
parking space



# Phase 1 North Entrance





Hot Sping



Gourmet



Cultural Workshop





## Shopping



## Year-Round Charmness at Yonezawa Ski Resort

We have all-season activities on-site to cater for everyone from young to elderly, fun to relaxing, short and long breaks. Meeting the well-known local cuisine, relaxing and unwinding onsen, and experiencing the cultural workshop, as well as a complete range of shopping experiences from renowned brands to day-to-day purchases, are all available in just one place.





## Yonezawa Beef

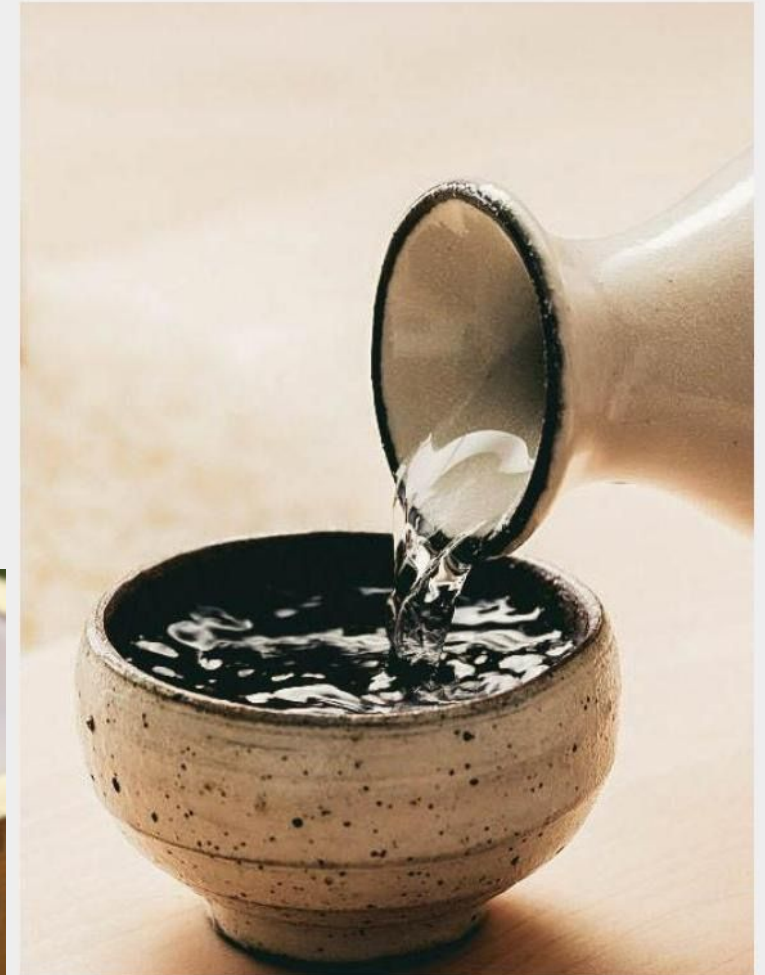
‘Along with Matsuzaka and Kobe ,Yonezawa is listed among Japan’s Three Great Wagyu’

Protected under Japan’s Agricultural and Forestry Products Geographical Indication (GI) system. Only beef raised and produced in the Yonezawa region using the same methods can be called "Yonezawa Beef." Known for its delicate marbling, exquisite tenderness, and rich flavor, this premium beef is a must-try delicacy for every food enthusiast.



## Toko Sake Museum

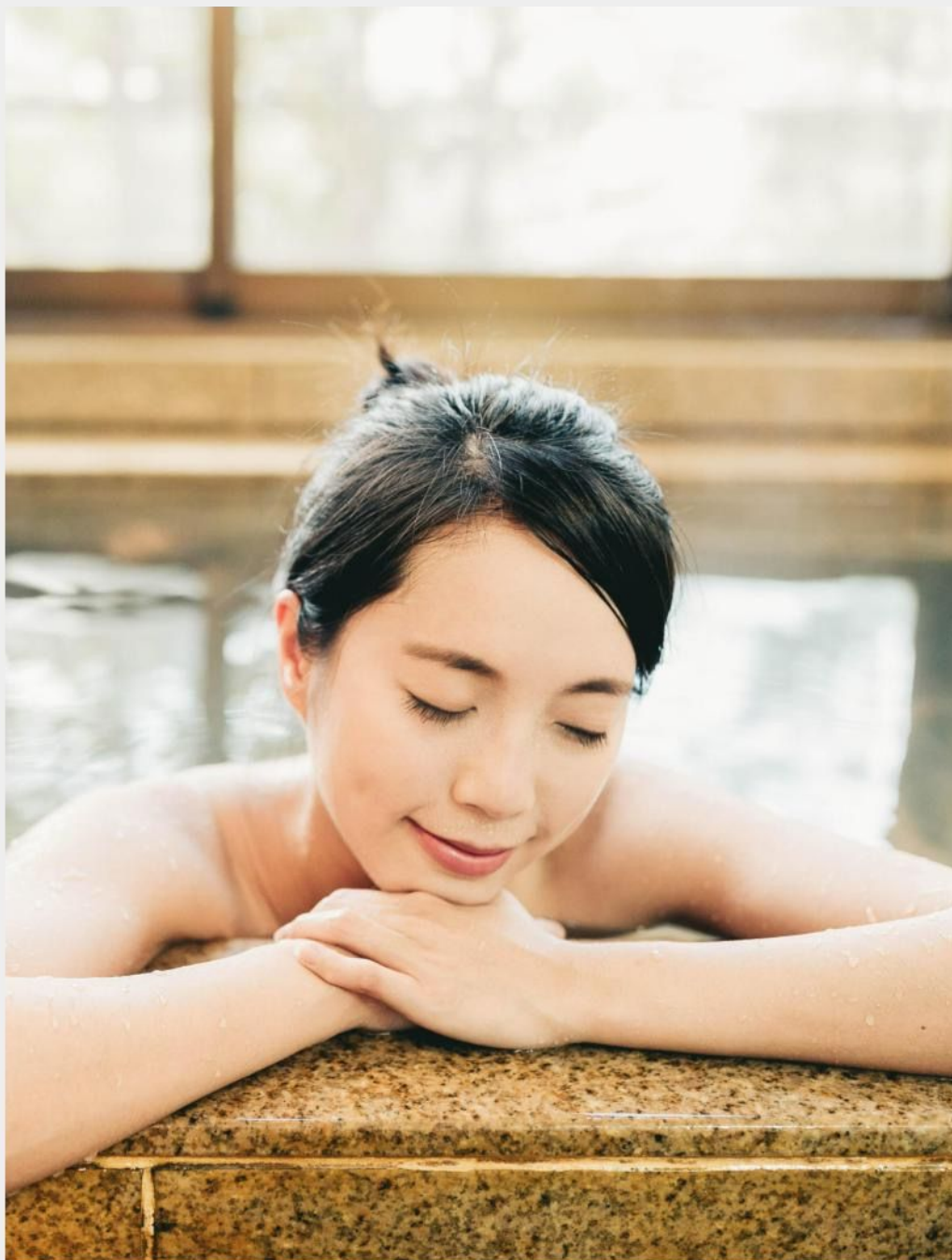
With a history spanning 400 years, the Toko Sake Museum takes you on a journey through time, exploring both traditional and innovative brewing techniques. Experience the brewing environment of the Edo period and gain a deep understanding of the sake-making process and its cultural significance. Here, you can taste the finest Junmai Daiginjo and modern sake varieties, immersing yourself in the unique charm of Yonezawa's sake culture. This is a dual experience of both taste and knowledge, where you can savor exquisite sake while discovering the rich history and craftsmanship of a century-old brewery.



### JUYONDAI | A Legendary Masterpiece of Sake

Carrying forward a century-old brewing tradition from Yamagata, Juyondai represents the pinnacle of Japanese sake. With its pure, refined taste and smooth texture, it is a true embodiment of the ultimate sake experience, standing as a celebrated icon of Japanese craftsmanship.





## World-Renowned Onsen

Just a 20-minute drive from the resort, you'll reach the peaceful Onogawa Onsen area. Known for its picturesque hot spring streets and rich traditional ambiance, this area is famous for its "beauty bath" hot springs, renowned for their delicate waters that nourish the skin and soothe the mind and body. Strolling through this tranquil onsen town, you can not only enjoy the warm, therapeutic waters but also immerse yourself in the local culture, experiencing perfect relaxation for both body and soul.

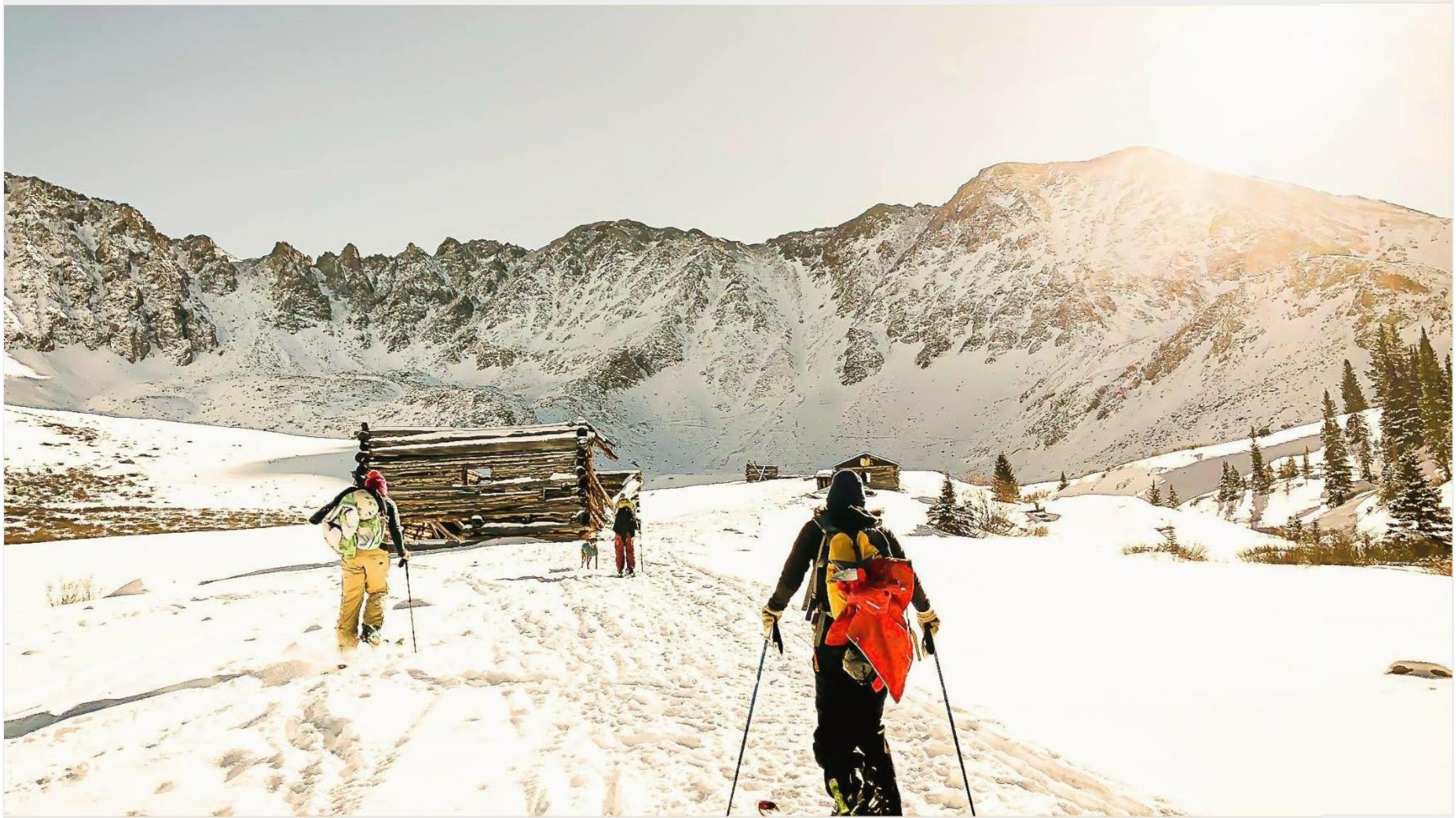




## Cosmopolitan Culinary

Just a 15-minute drive from the resort, you'll arrive at the vibrant Yonezawa City Center. Here, restaurants offer not only authentic Japanese cuisine but also innovative dishes that blend international flavors, catering to a variety of tastes. You can indulge in classic delights such as Yonezawa beef, handmade soba noodles, and sushi, as well as enjoy global favorites like Western and Italian dishes. Yonezawa's cafés and dessert shops are particularly charming, serving exquisite sweets and handcrafted beverages—perfect spots for relaxing and unwinding.







## Explore Nature's Charm from a Unique Perspective

Have great fun with Yonezawa snow, from the very young enjoying sleigh riding, to group trail hiking, snow mountain biking, and the up-and-coming sport of golf-skiing all available for grabs.











## Escape To The Wonders Of Summer

Savor the magic of summer in Yonezawa, where golf, glamping, hiking, biking, sky-diving, kid cart racing, and photowalking offer unforgettable moments of adventure.







## Local & International Events and Festivals

Yonezawa offers a vibrant array of seasonal activities, each full of charm and allure.

In **spring** (April), the Uesugi Festival honors the legacy of Uesugi Kenshin, with traditional parades and performances that highlight rich historical culture, while the night sakura blooms create a romantic atmosphere.

In **summer** (August), the fireworks festival lights up the night sky with dazzling displays, filling the air with excitement and energy.

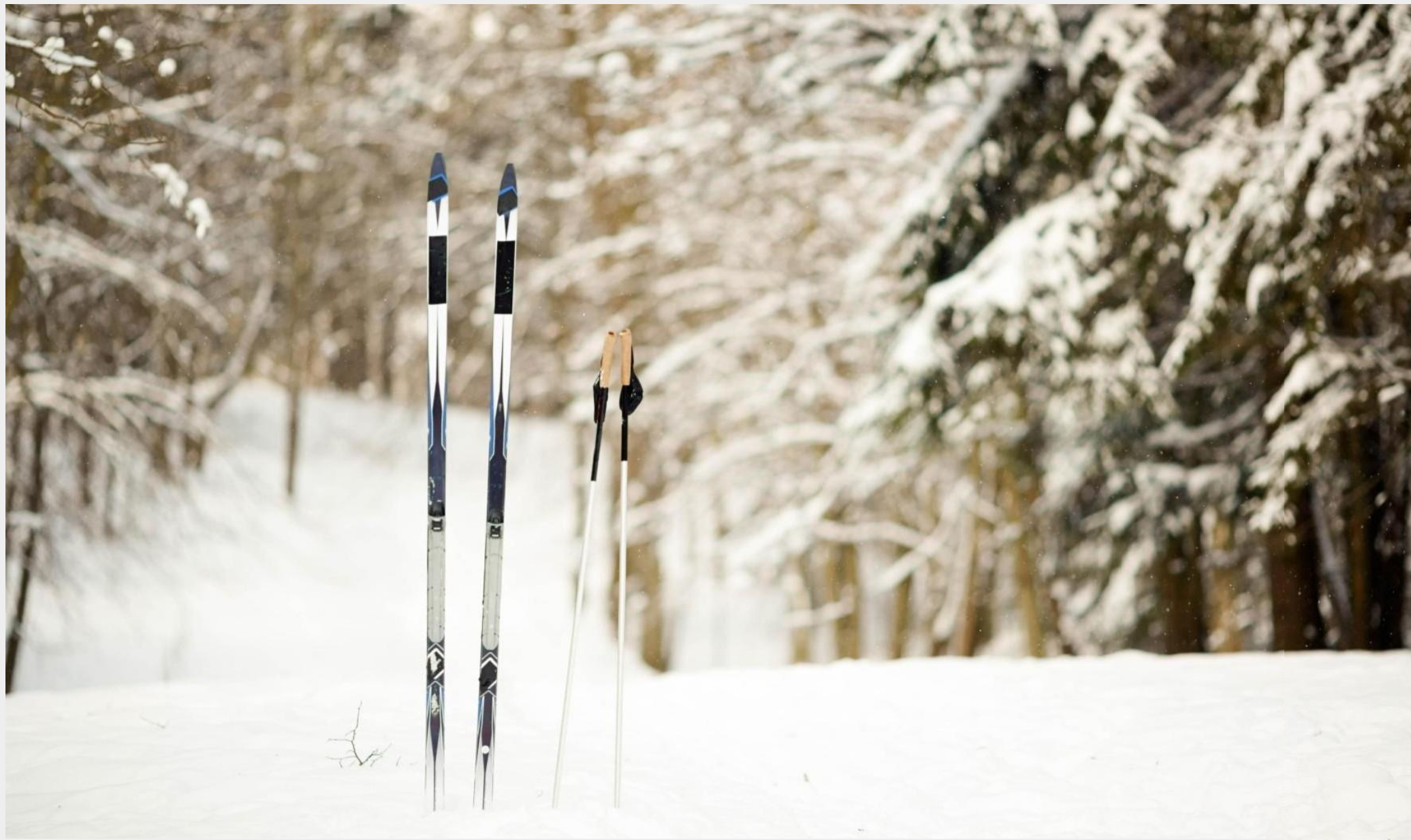
In **autumn** (September), the Harvest Festival celebrates abundance, with various activities set against the backdrop of the breathtaking mountain scenery, adorned with vibrant autumn colors.

In **winter** (February), the Uesugi Snow Lantern Festival transforms the streets with snow lanterns, creating a magical ambiance that pairs perfectly with the local hot springs, becoming a highlight of winter tourism.

Throughout the year, Yonezawa invites visitors to experience the perfect blend of tradition and modernity.











## Exclusive Owner Benefits

- Enjoy 2 all-day passes to Yonezawa Ski Resort each year.
- Priority booking for ski resort activities passes (up to 4 passes per booking).
- Complimentary Yonezawa Snow Club membership and the first 5 years of annual fees.



## Exclusive Ski Resort Lease Benefits

- Enjoy an additional 25% discount on resort bookings (excluding specified dates).
- 7 complimentary nights each year (excluding specified dates, cannot be combined with other promotions).
- Receive a bottle of Yamagata sake for free when staying during your birthday month.



## Yonezawa Snow Club Membership Exclusive Benefits

- Yonezawa Itinerary Concierge Service
- Enjoy complimentary personalized concierge planning for your Yonezawa trip, including custom itineraries, restaurant reservations, car rentals, or any special arrangements. We provide tailored services to ensure your experience is flawless.
- 50% off concierge services for itinerary planning in other regions of Japan.
- Free golf club and ski board storage for the first two years.
- 20% off at select restaurants.

\* Terms and conditions apply. Please refer to the details for more information.





## Yonezawa Snow Club Membership Exclusive Benefits

## Ski Equipment Storage Service

Being your year-round ski and snowboard valet, we provide an all-inclusive service to take care of all the hassles involved with having your own winter sports equipment.



# Butler Service

Our multilingual, committed team will handle your airport arrival clearance, airport transport, reservation bookings for everything from in-room massages to hair cuts, tour and excursion arrangements as part of our member-only butler services. You can get in touch with the experienced concierge staff in advance to arrange for a hassle-free trip.











## Phase One Design Concept

- ❖ The resort gently stretches along the winding river and the undulating terrain, offering a serene and seamless experience.
- ❖ Upon arrival, the resort's iconic logo and exquisite sculptures mark the beginning of a luxurious retreat, welcoming every guest with warmth and elegance.
- ❖ Phase One is located in the sunniest area of the site—Riverside Apartments, which boast beautiful river views and captivating sunset vistas, providing an idyllic setting for relaxation and enjoyment.



# Riverside I

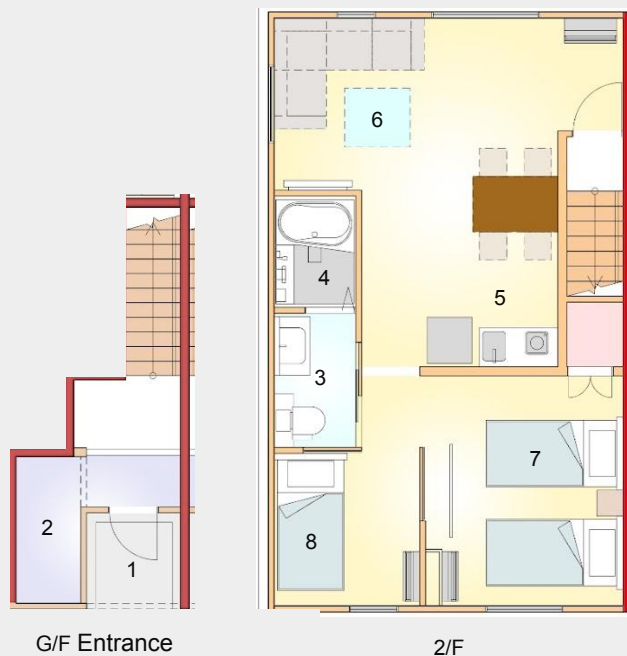


- 1 Entrance
- 2 Ski Equipment Storage Room
- 3 Restroom
- 4 Bathroom
- 5 Kitchen
- 6 Living Room
- 7 Bedroom

**Type A**  
**Studio**  
34.45 sqm  
372 sqft



# 河畔渡假村一期



- 1 Entrance
- 2 Ski Equipment Storage Room
- 3 Restroom
- 4 Bathroom
- 5 Kitchen
- 6 Living Room
- 7 Bedroom 1
- 8 Bedroom 2

**Type B**

**2 Bedroom Apartment**

56.09 sqm

604 sqft









## Project Design Advantages

- ❖ **Freehold Land:** Each unit is sold with permanent ownership, ensuring long-term security and peace of mind.
- ❖ **Dedicated Parking Space:** Each home includes an exclusive parking space right at the entrance, offering convenience and easy access.
- ❖ **Natural Mountain Spring Water:** Every unit is provided with pure, natural spring water from the nearby mountains, enhancing your stay with a refreshing and unique experience.
- ❖ **Private Hot Spring Bath:** Each unit features a private hot spring bath, utilizing the ski resort's natural mountain spring water, allowing you to enjoy a pure, intimate hot spring experience right at home.
- ❖ **Fully Furnished:** Each unit is meticulously designed and fully equipped with furniture and appliances, ready for you to move in without the hassle of post-purchase renovations.
- ❖ **Ski Equipment Storage:** Each unit comes with a dedicated ski storage room, so you can easily prepare and enjoy skiing at any time.
- ❖ **Flexible Floor Plans:** A variety of floor plans are available, with one to three beds, ensuring you can find the perfect living space to suit your needs.



# David Morley Architects



Architect

## David Morley and Team

DavidMorleyArchitects

---

David Morley founded David Morley Architects in 1987. Since then, he has led the firm in completing over 500 projects and receiving more than 100 prestigious awards. These accolades include the Sustainable Practice of the Year Award, UK Building of the Year for Sustainability, and Best Mixed-Use Development in the UK. In 2012, David published his first book, *Five by 5*, and appeared on the Sky TV program *Developing Britain*, where he shared his architectural insights. He also serves as a judge for the Royal Institute of British Architects (RIBA) competitions and the Wood Prize.





## 獎項

•**British Construction Industry Awards 2022**

Culture & Leisure Project of the Year

•**Brick Awards 2022**

Education Sector

•**RIBA London Award 2021**

Winner

•**British Homes Awards**

Regeneration Project of the Year 2021

•**Wood Awards 2020**

Education and Public Sector - Winner







本冊中包含的所有圖片僅供參考，最終解釋權歸株式会社WVIP HOLDINGS GROUP所有。

發展商保留在建築物落成前，根據建築師和/或有關當局的指示或批准修改建築物任何部分或多個部分的權利。所有圖則、佈局、數據和規格均可更改，且不構成買賣合約或合同陳述的一部分。